



# **Northern Grade Band Alignment**

**January 12, 2023**

# Objective

This presentation will provide information to support the analysis of what a PK-6 & 7-12 grade band could look like in the Northern area schools.

## Topics include:

- Review purpose and why we are here
- Review Options A, B, and C
- Analysis of Option A and B
- Review committee feedback for Option C
- Further analysis of Option C
- Gather additional feedback on all options

**Today's session is intended to be a work session. Information shared between GCPS staff, Grimm + Parker associates, committee stakeholders, and community is intended to assist in preparing a recommendation to the Board of Education.**

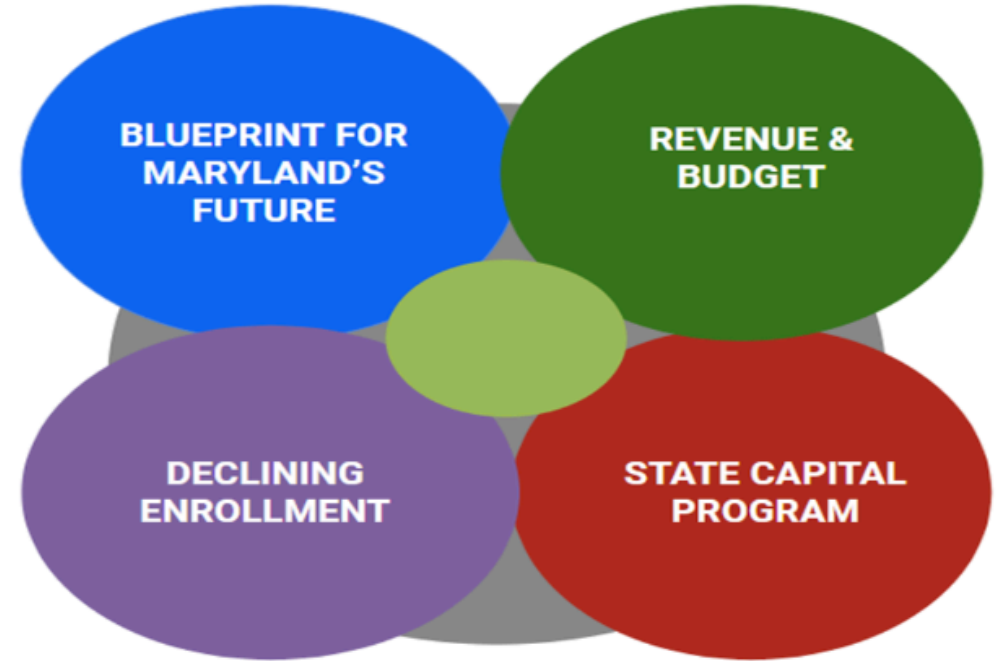


# A Perfect Storm

At the same time work was on-going to modernize Southern Middle School, other variables changed.

- **Blueprint for Maryland's Future Act (The Blueprint)** is a landmark, generational piece of legislation intended to enhance and improve the investment in and operation of Maryland's public school system.
- **Declining Enrollment** has been a hardship for Garrett County Public Schools since the 1970s, losing on average 1.7% per year since 2013.
- **Revenue & Budget** will continue to be squeezed with the systems new requirements of Blueprint (increasing costs) and decline in enrollment (decreasing potential revenue).
- **State Capital Program** has undergone revolutionary change with the adoption of the Built to Learn Act and accountability changes at the Interagency Commission of School Construction.

**These changes have forced GCPS Staff, Board and Stakeholders to consider alternatives in facility utilization and grade band alignments.**



Perfect Storm - a particularly bad or critical state of affairs, arising from a number of negative and unpredictable factors (Oxford Dictionary).

# A Perfect Storm - Blueprint

**The Blueprint for Maryland's Future Act:** The Blueprint is a landmark piece of legislation passed in 2021, which includes comprehensive changes to Maryland's early childhood and public schools. The legislation consists of those policies and accountability requirements recommended by the Commission on Innovation and Excellence in Education.

## The Five Blueprint Pillars

### 5 BLUEPRINT PILLARS

The Blueprint encompasses five pillars, each including key initiatives aimed at transforming the quality of education in Maryland, and narrowing and closing opportunity and achievement gaps.



**EARLY CHILDHOOD  
EDUCATION**

- Support more families to access no cost Pre-K
- Scale the impact of Patty & Judy Centers
- Expand family options through public/private Pre-K Partnerships



**HIGH-QUALITY & DIVERSE  
TEACHERS & LEADERS**

- Increasing starting salary to minimum \$60,000
- New career ladder and incentives for National Board Certified Teachers up to \$17,000
- Raising expectations for teacher preparation and induction



**COLLEGE & CAREER  
READINESS**

- New college and career readiness standard by 10th grade
- Aligned curriculum resources and assessments
- College and career readiness and support pathways
- Expanded career and technical education system



**MORE RESOURCES FOR  
STUDENT SUCCESS**

- Community Schools and School-based Health Centers expansion
- Concentration of Poverty grants
- Targeted supports for historically underserved students



**GOVERNANCE &  
ACCOUNTABILITY**

- Expert Review Teams
- Accountability and Implementation Board
- Local education agency Implementation Plans
- Maryland State Department of Education monitoring and technical assistance



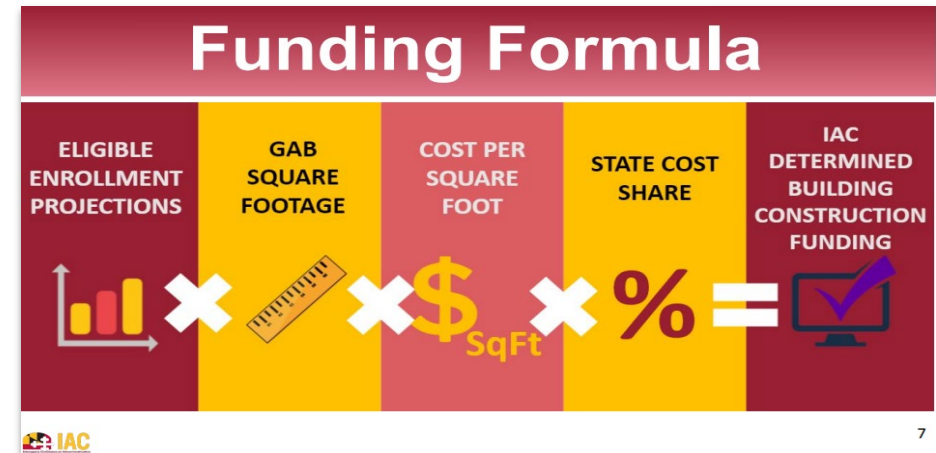
# A Perfect Storm - State Capital Program

**Built to Learn Act:** Enacted into law in 2020, the Built to Learn (BTL) Act became effective on February 12, 2021. The BTL Act created significant funding opportunities, but also required that much information be gathered and reported on all of Maryland's public school buildings. Additionally, the BTL Act:

- Creates the Public School Facilities Priority Fund, which uses the results of the Statewide Facilities Assessment required by Education Article §5-310 to prioritize funding to schools with the highest needs.
- Requires school systems to report on utilization of facilities annually
- The State Cost Share Percentage for Garrett County is now equal to that of our neighboring county to the east.

GCPS has built a collaborative relationship with the Maryland State Interagency Commission on School Construction (IAC) to understand how Garrett County may maximize state participation in our capital plan.

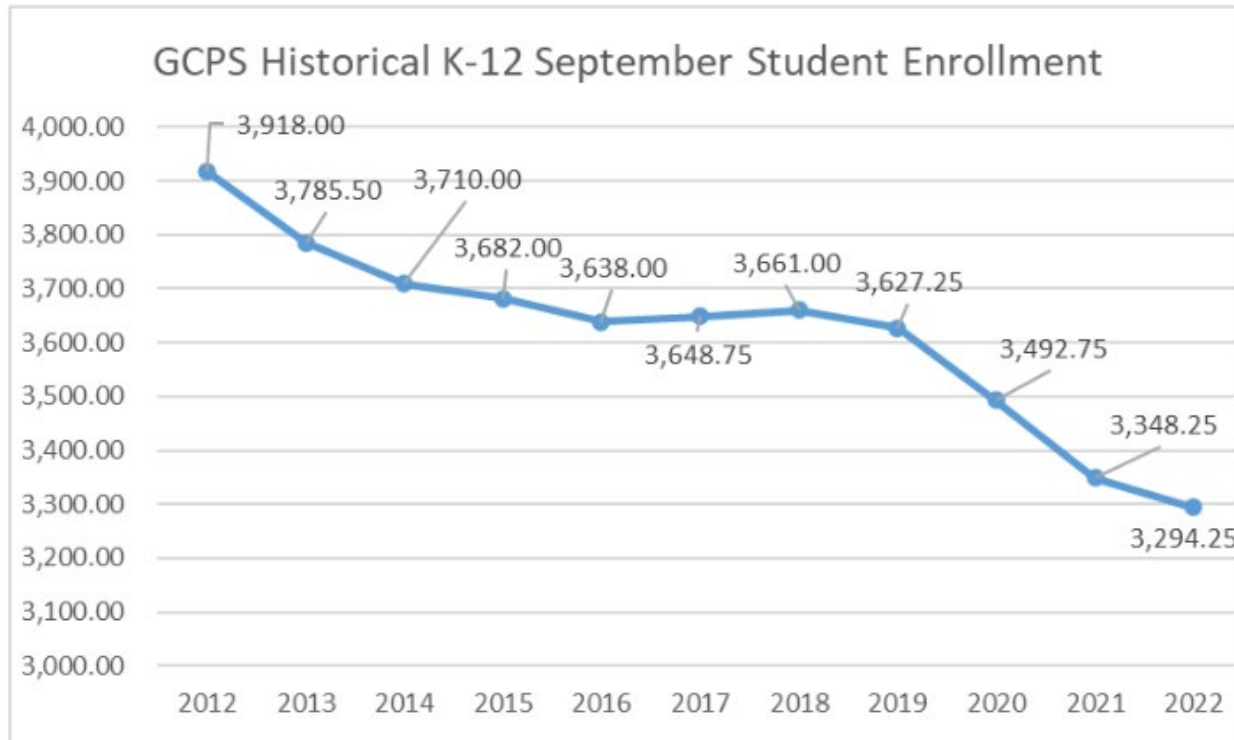
Following two visits to Garrett County Senior IAC staff members, Alex Donahue and Bret Waskiewicz, presented to the BOE on programs, funding eligibility and cost of ownership on March 22, 2022.



# A Perfect Storm - Student Enrollment

**Declining Student Enrollment: system-wide** GCPS has experienced continued decline in student enrollment. From September 2012 to September 2022, GCPS is down 623.75 students or 15.9%. NOTE: PreK is not included.

According to the **Maryland Department of Planning**, the trend in enrollment decline is estimated to continue in the coming years.



**Northern High School Graduating Class sizes have steadily decreased:**

**1997 - 135 students**

**2012 - 122 students**

**2017 - 120**

**2022 - 103 students**

**This is a 24% decrease**

# A Perfect Storm - Budget

**Revenue:** The leading drivers for GCPS operating revenue is student enrollment and local wealth. As student enrollment declines and local wealth increases, GCPS' revenue will likely continue to be ***flat to declining***.

**Expenditures:** ***Flat to declining*** revenue presents budgetary challenges because:

**High Annual Inflation Rate:** The annual inflation rate for the United States was 7.7% for 12 months ended October 2022, therefore goods and services continue to cost more, even if we aren't purchasing more.

**Staffing Challenges:** GCPS is not alone in experiencing a shortage of qualified people to staff open positions and with a seasoned workforce there will likely be more open positions.

**Federal Funding Cliff:** Federal pandemic relief funds have made it possible to fund many positions and stand up enriching opportunities for students and staff. That funding must be spent by September 2025.

**Blueprint for Maryland's Future implementation requirements** - teacher salaries & programming requirements will require budgetary increases requiring dollars to shift from current items to Blueprint requirements.



# Weighted Student Funding



## Overview

## The Blueprint for Maryland's Future Funding Formula

The formula for the Blueprint is a weighted-student formula. That means, the formula provides resources to local education agencies (LEAs) based on total student enrollment and on the enrollment of certain student subgroups. The formula also provides program funding for Blueprint-mandated programs.

### Base Per-Pupil Amount

- The target per-pupil foundation provides for the costs of providing adequate educational services for an average student. All eligible full-time equivalent students receive this formula aid.
- Any formula weights amount refer back to this program. For example, a weight amount of 85% means 85% of the target per-pupil foundation.

### Weighted Amounts

- Weighted amounts provide additional resources to a LEA based upon enrollment of specific subgroups.
- This funding reflects the fact that some student groups may require more resources in order ensure the provision of adequate educational services. For example, an English learner (EL), on average, requires more resources than a non-English learner.

### Program Amounts

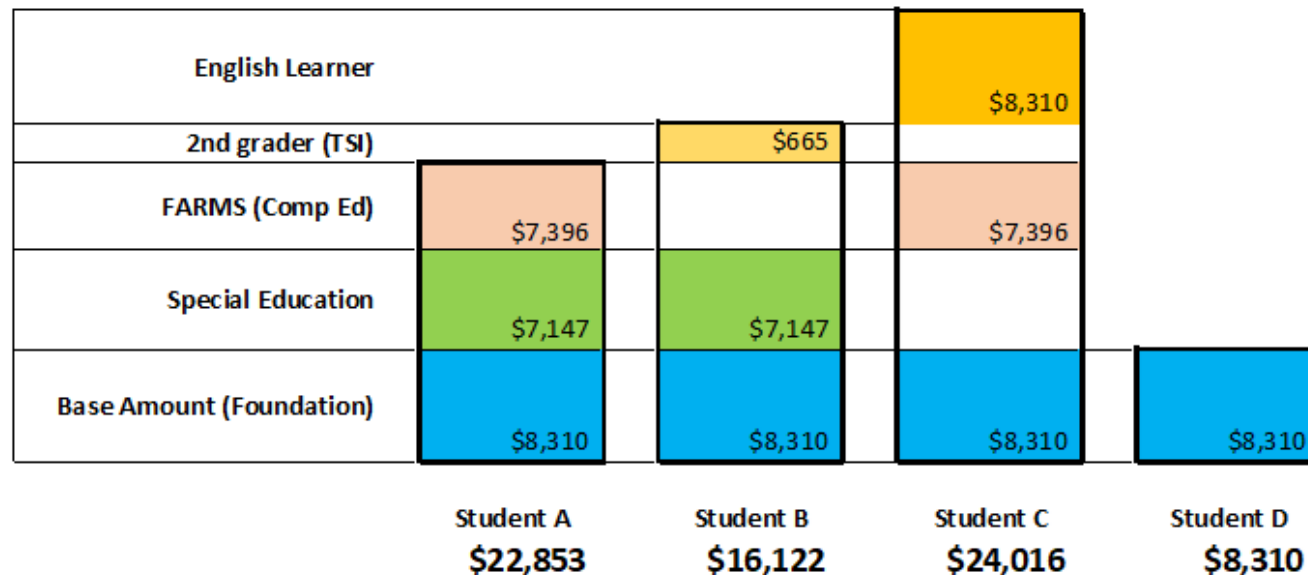
- Program amounts are allocated to LEAs at a flat, non per-pupil amount. For example, the Guaranteed Tax Base Aid program provides additional State aid to LEAs that 1) have less than 80 percent of the statewide average wealth per pupil, and that 2) provide funding above the local share required by the Foundation Program. The program encourages less wealthy jurisdictions to maintain or increase local education tax effort.

# Weighted Student Funding

The total amounts for the base and additional subgroups is dictated by law and funded with both state and local funding. The split is dependent upon the relative wealth of the county.

## A weighted student funding system

1. Allocates a base amount for all students and then
2. Allocates additional amount(s) for students with certain characteristics called subgroups.



## Blueprint Required Student Sub Groups:

- High Poverty/Low Income
- English Learners
- Special Education
- Meeting CCR standard
- Grade Bands (PK & K-3)

Maryland's Schools are now required to budget, monitor and report expenses per pupil, per program per school. Funding MUST follow the student.



# Grade Band Alignment Options

The discussion today is surrounding what a PK-6 & 7-12 grade band may look like in the northern district schools. We want to hear from you!

Superintendent Baker's team has analyzed the opportunities and impacts a change in grade band alignment would have on the following areas with respect to programming and operating budget:

- Educational opportunities
- Legislative mandates of the Blueprint for Maryland's Future Act
- Special Education Services for students Birth to 21
- Student Services including Mental Health, Behavior Intervention and School Nurses
- School System Support Services consisting of Facilities, Safety and Security, Transportation, Food & Nutrition Services, Human Resources & Finance

# Northern Approach: Commitment to Equity

## Grade Band Alignment PK-6 & 7-12 Possible Educational Opportunities

Based on work to date on Grade Band Alignment, GCPS has identified the following as potential areas of added educational value for students should the elected board move forward with grade band alignment county-wide.



### *Added Value*

#### Elementary

- Early childhood centers offering space for Head Start/collaborative 3 year old programs that meet rigorous standards aligned to the Blueprint
- Judy center spaces for early childhood initiatives to support kindergarten readiness
- Computer science resource for upper elementary
- Media specialist resource to support student research
- Maker's space/science labs for elementary students
- Student council and leadership opportunities for 5th graders
- Increased vertical alignment opportunities
- Junior National Honors Society
- Regional behavior suites with concentrated mental health support with centralized staff
- Outdoor learning opportunities
- Collaborative space for intervention services for small groups and collaborative learning.
- Increased stability in class size

#### Secondary

- Opportunity for 8th graders to earn high school credit
  - Technology Education
  - Computer Science
  - Physical Education
  - Fine Arts including Dance
  - Foreign language
  - Accelerated path for English
  - JROTC
- Therapeutic support classrooms with centralized supports
- Behavior suite with concentrated mental health services
- Increased opportunity for support pathways for students who are not on track to meet College and Career Readiness
- Increased vertical alignment opportunities
- Add an additional foreign language
- Sustain current electives and programming

# Grade Band Alignment PK-6 & 7-12

## Possible Programmatic Considerations

The programs listed on this slide are local priorities that are not mandated by the state according to state law. If the school system footprint is not addressed, GCPS will have to discuss the sustainability of all non-mandated programs, many of which are listed below in no particular order.

- Elective courses:
  - Creative Writing
  - Journalism Yearbook/Journalism Newspaper
  - SAT Prep
  - Statistics
  - Psychology and Economics
  - Contemporary Problems
  - Environmental Science
  - Music Theory, Piano I and II
  - Weight Training/Physical Activity
  - CTE programs would need to be assessed based on enrollment. The only mandated program is computer science.
  - Ag Mechanics
  - Wildlife and Forestry Management
  - Web Design and Desktop Publishing
  - General Electronics
  - Drafting
  - Auto CAD
  - Information Technology and Computer Applications
- Hickory Environmental Education Center
- Robotics
- Offering general, merit, and honors course levels
- Field trips
- Transportation for sports, band, robotics, CTE, Arts Fair etc.
- Learning Beyond the Classroom
- Number of Sports Offerings
- Universal fully funded four year old pre-k
- National Honors Society
- National History Day
- Science Fair/Envirothon
- I Can Swim
- Positive Behavior Interventions and Supports (PBIS)
- STARS Program
- Fine Arts Fair
- College & Me
- Mock Trial
- Student council
- Amount of Pupil Services Support

# Student Access to Opportunities

**In order to realize the possible opportunities on the prior slide in the northern end of the county, it will be essential to have a consistent PK-6 and 7-12 grade band configuration. Without a consistent grade band configuration we will not be able to offer the same opportunities to students on the Northern End. Below are opportunities we will be unable to offer resulting in unequal access to opportunities across the county. Additional concerns are also listed.**

- Computer science for upper elementary
- Media specialist supports for elementary students
- Student council and leadership opportunities
- There will be barriers and greater inability to provide elementary students with science lab/maker space opportunities
- There will be barriers and greater inability to provide adequate behavioral suites with concentrated mental health support
- There will be limited and possibly no opportunities to enhance the special education center areas (kitchenette, shower etc.)
  - There will be greater variances in class sizes across grades and schools at the elementary level on the northern end
- Additional foreign language
- Sustaining current electives and programming will become a significant issue
- There will be barriers and greater inability to provide support pathways for students who are not on track to meet College and Career Readiness
- Opportunities for earning high school credit in the 8th grade will become a significant problem and may not be possible in many cases

- Social opportunities associated with being in a Jr./Sr. High School will not occur and exposure to opportunities such as FFA, JROTC, CTE courses etc. will be limited
- Sustaining talented and gifted teachers who are currently funded through federal recovery funds will be a significant challenge if not an impossibility.

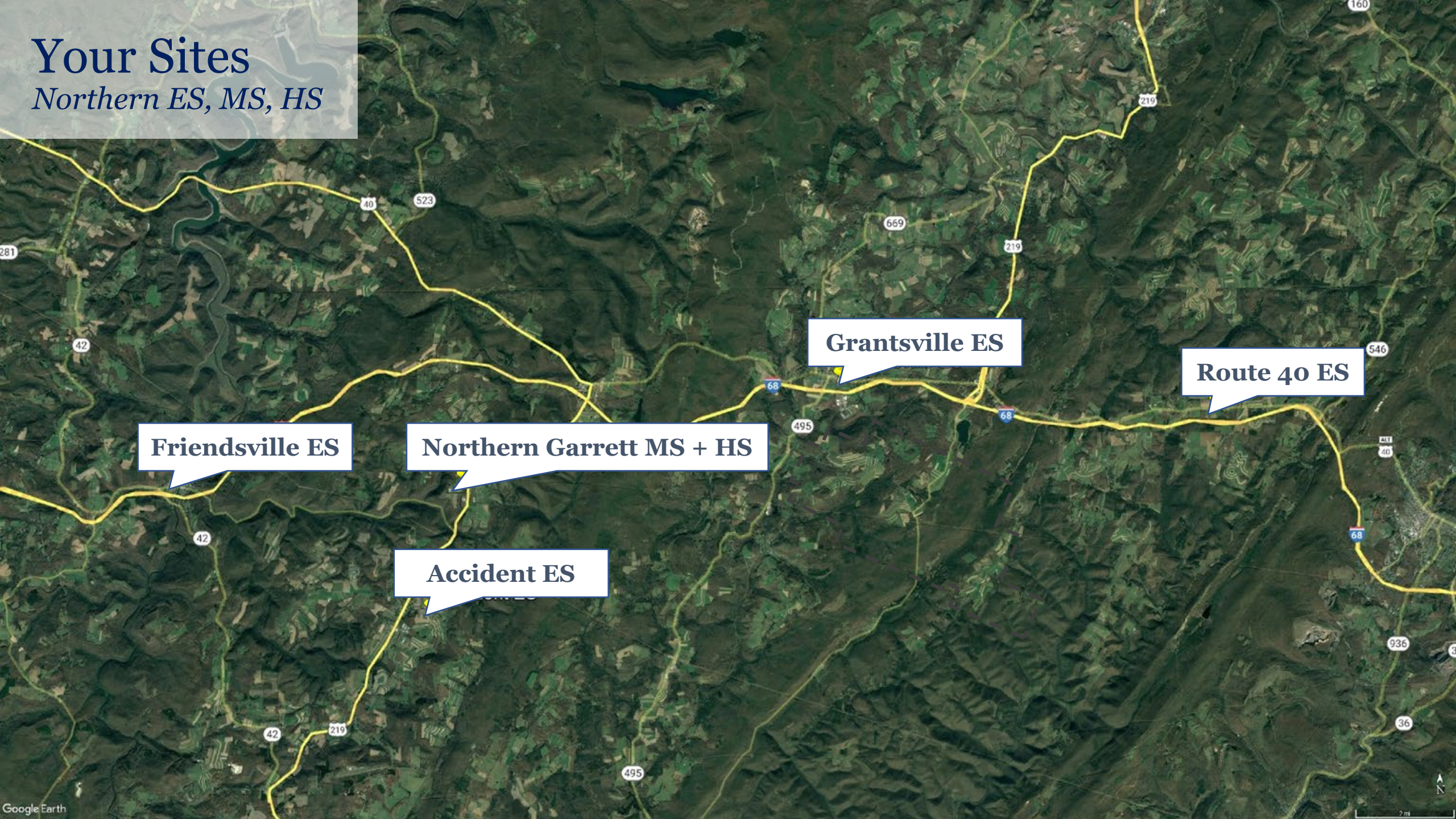
#### **Additional concerns include:**

- Having different schedules/time allotments for instruction due to having one traditional middle school and one 7-12 grade school is a significant concern
- Additional requests for Out of Areas due to the instructional grade bands
- Challenges specific to student transfers that occur between schools
  - Building and implementing the Blueprint Implementation Plan for six or more different grade band configurations
  - Curriculum challenges specific to adopting and implementing resources for students in 6th-8th grade attending schools in various grade bands
- Challenge with spreading staff thin across the footprint remains
- Creates less opportunity for departmentalization which allows staff to specialize and address workload concerns
- Fosters less opportunity for collaboration amongst teachers within the same grade which is counter to the intent of the Blueprint



# Your Sites

*Northern ES, MS, HS*



**Friendsville ES**

**Northern Garrett MS + HS**

**Accident ES**

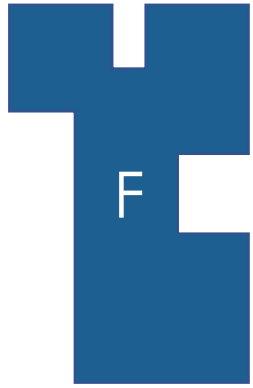
**Grantsville ES**

**Route 40 ES**



# Current Conditions

## *Existing Facilities*



### **Friendsville ES**

**PK-5 Enrollment = 138**

**Current SRC = 294**

**Square Feet= 31,388**



### **Accident ES**

**PK-5 Enrollment = 235**

**Current SRC = 327**

**Square Feet= 34,815**



### **Grantsville ES**

**PK-5 Enrollment = 171**

**Current SRC = 294**

**Square Feet= 49,862**



### **Route 40 ES**

**PK-5 Enrollment = 122**

**Current SRC = 190**

**Square Feet= 25,530**

\*SRC= State Rated Capacity

\*Enrollment= As of 9/30/22

The SRC above is according to the Educational Facilities Master Plan 22-23  
SRC is calculated based on how space is utilized within a school. Projected SRC  
based on footprint changes will be shared later in the presentation for Option A  
and B.

# Your Project

## Existing Facilities



**Northern MS**  
**6-8 Enrollment = 320**  
**Current SRC = 742**  
**Square Feet=84,008**



**Northern HS**  
**9-12 Enrollment = 439**  
**Current SRC = 903**  
**Square Feet= 121,803**

\*SRC= State Rated Capacity  
\*Enrollment= As of 9/30/22

The SRC above is according to the Educational Facilities Master Plan 22-23  
SRC is calculated based on how space is utilized within a school. Projected SRC based on footprint changes will be shared later in the presentation for Option A and B.

# OPTION A

## Overview

	All Options	A	B	C
	Northern High School to match gradeband alignment at Southern High School - supporting grades 7-12.	<b>Maintain 4 Northern Elementary Schools:</b> Grantsville Elementary School, Accident Elementary School, Friendsville Elementary School, and Route 40 Elementary School	<b>Maintain 3 Northern Elementary Schools:</b> Grantsville Elementary School (including Route 40 Elementary enrollment), Accident Elementary School, Friendsville Elementary School	<b>Maintain 1 Northern Elementary School:</b> Grantsville Elementary School (+Route 40 Elementary enrollment), <b>Complete limited renovation of Northern Middle School to support grades PK3-6</b> for Accident Elementary School and Friendsville Elementary School
<b>Requirements</b>	Reconfigure spaces for grades 7-8 at Northern High School which will require a limited renovation.	Reconfigure space to accommodate 6th grade at all 4 elementary schools and consider PK3, where possible.	Reconfigure spaces in Grantsville to accommodate Rt. 40 enrollment including 6th grade and PK3. Reconfigure space at Accident and Friendsville to accommodate 6th grade and PK3, where possible	Complete limited renovation for Northern Middle School to support Accident Elementary School, Friendsville Elementary School PK3-6, STARS.
<b>Vacate</b>	N/A	Vacate Northern Middle School	Vacate Northern Middle School, Route 40 Elementary School	Vacate Accident Elementary School, Friendsville Elementary School, Route 40 Elementary School

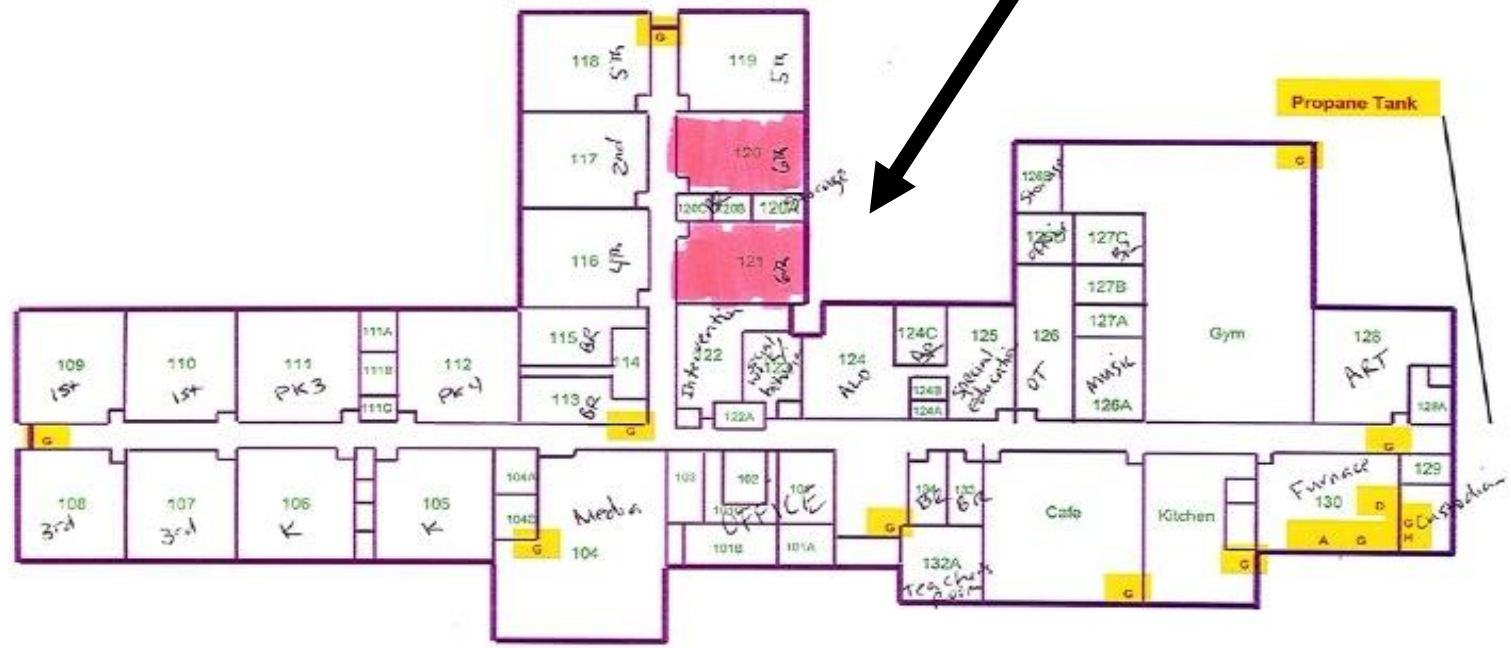


# Accident Elementary PK-6 Model

**Option A**

Square Feet= 34,815  
 Projected SRC= 334  
 Projected Enrollment= 263

- The map shows one option to include 6<sup>th</sup> grade at Accident (highlighted in pink).



Accident Elementary School

Revised Jan 2014

- A - Electrical Shut Off
- B - Boiler Cut Off - N/A
- C - Natural Gas Cut Off - N/A
- D - Propane Cut Off
- E - Fuel Oil Cut Off - N/A
- F - Water Shut Off
- G - Fire Extinguishers
- H - Fire Sprinkler Cut Off
- I - Utility Lines & Pipes associated w/Facility and Grounds



# Accident Elementary School PK-6 Model

## Option A

### Building Needs

- Needs full roof replacement
- Parking lot needs resurfaced
- Improved drainage needed at back of building
- Damaged sidewalk curbs
- Ceiling tile needs replaced throughout the school
- Classroom walls need redone (wallpaper needs to come down)
- Windows need replaced
- Vinyl composite tile replacement in gym
- Exterior Insulation and Finish (EIFS) Restoration





# Friendsville Elementary School PK-6 Model

**Option A**

Square Feet= 31,388  
 Projected SRC= 278  
 Projected Enrollment= 152

- The map shows one option to include 6<sup>th</sup> grade at Friendsville (highlighted in pink).



- A - Electrical Shut Off
- B - Boiler Cut Off - N/A
- C - Natural Gas Cut Off - N/A
- D - Propane Cut Off
- E - Fuel Oil Cut Off - N/A
- F - Water Shut Off
- G - Fire Extinguishers
- H - Fire Sprinkler Cut Off - N/A
- I - Utility Lines & Pipes associated w/Facility and Grounds

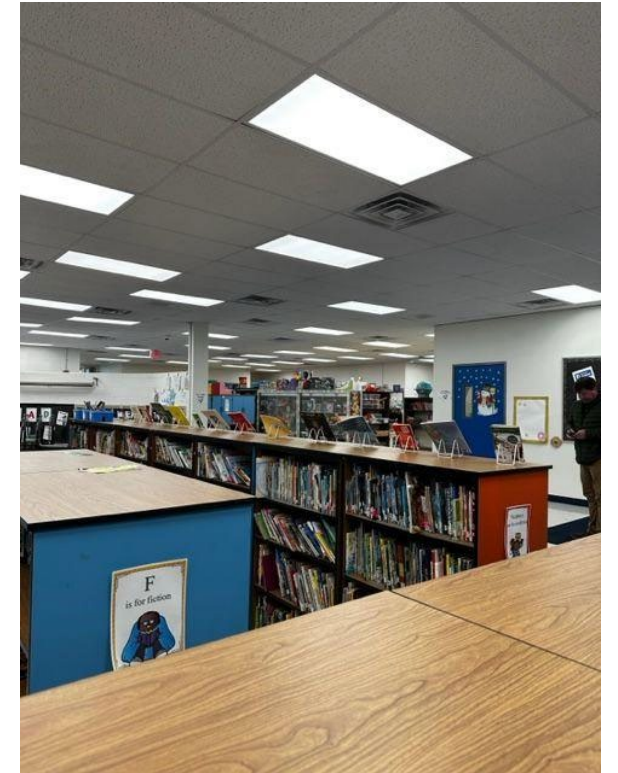
**Friendsville Elementary School  
Upper Level**

# Friendsville Elementary School PK-6 Model

## Option A

### Building Needs

- Needs full renovation
- Open space school
- Many areas/systems reaching end of life
- Preheats are electric and all need replaced
- Repave parking lot
- Sidewalk needs repaired
- Interior doors replaced
- Air Handler Units (AHU's) need replaced
- Chillers need replaced
- Faucets need replaced in all bathrooms
- AC Compressors and cooling towers reaching end of life and need replaced
- Roof Replacement





# Grantsville Elementary PK-6 Model

## Option A

Square Feet= 49,862  
Projected SRC= 380\*  
Projected Enrollment = 197

- The map shows one option to include 6<sup>th</sup> grade at Grantsville (highlighted in pink).



\* Projected SRC in this case is the projected SCR for PK-6 for GV/Rt.40 Combined

# Grantsville Elementary School PK-6 Model

## Option A

### Building Needs

- None due to the recently completed full renovation that included enclosing the open space classrooms, installing a security vestibule, air conditioning and replacing the roof.



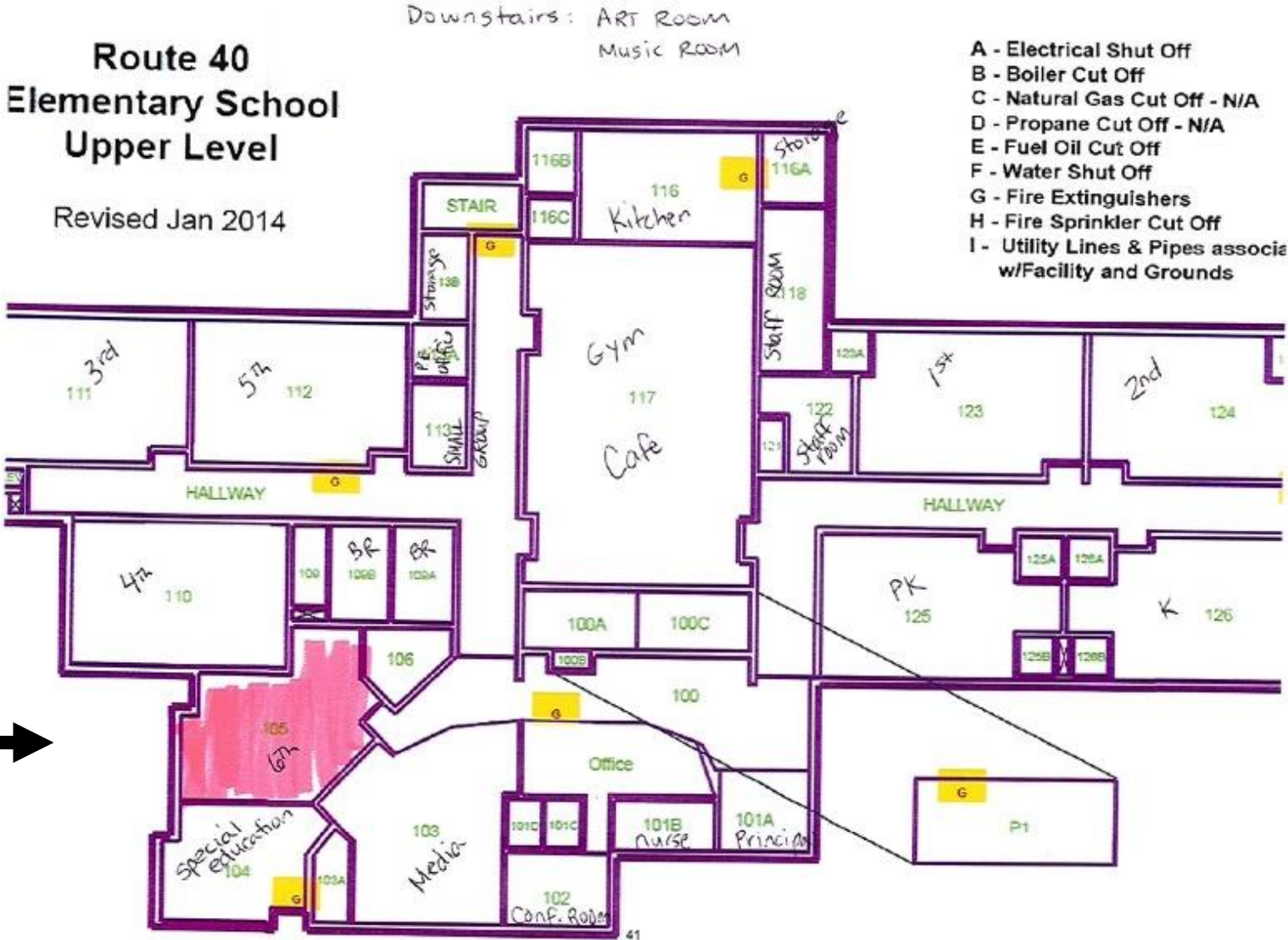


# Rt. 40 Elementary School PK-6 Model

## Option A

Square Feet= 25,530  
Projected SRC= 190  
Projected Enrollment= 145

- The map shows one option to include 6<sup>th</sup> grade at Rt. 40 (highlighted in pink).



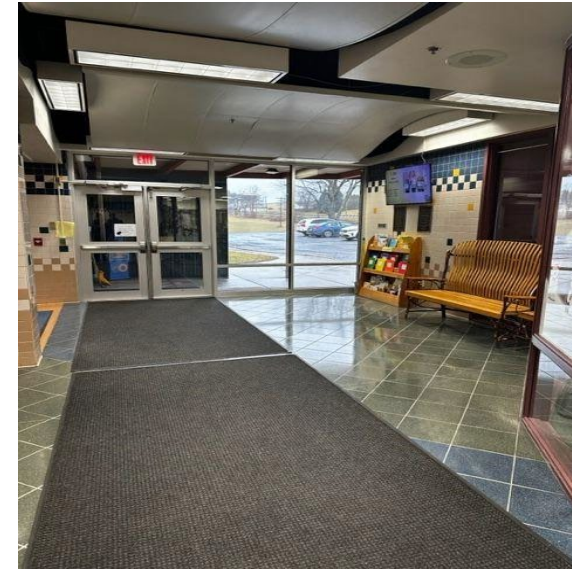


# Rt. 40 Elementary School PK-6 Model

## Option A

### Building Needs

- A planned Security Vestibule
- Roof restoration to repair rusting metal panels
- Sidewalk and curb replacements and parking lot resurfacing
- Hallway tile replacement
- Retaining wall replacement
- Air Conditioning installation
- Dual boiler replacement
- Mitigate water damage in lower part of basement



# OPTION B

## Overview

	All Options	A	B	C
	<i>Northern High School to match gradeband alignment at Southern High School - supporting grades 7-12.</i>	<b>Maintain 4 Northern Elementary Schools:</b> <i>Grantsville Elementary School, Accident Elementary School, Friendsville Elementary School, and Route 40 Elementary School</i>	<b>Maintain 3 Northern Elementary Schools:</b> <i>Grantsville Elementary School (including Route 40 Elementary enrollment), Accident Elementary School, Friendsville Elementary School</i>	<b>Maintain 1 Northern Elementary School:</b> <i>Grantsville Elementary School (+Route 40 Elementary enrollment), <b>Complete limited renovation of Northern Middle School to support grades PK3-6</b> for Accident Elementary School and Friendsville Elementary School</i>
<b>Requirements</b>	Reconfigure spaces for grades 7-8 at Northern High School which will require a limited renovation.	Reconfigure space to accommodate 6th grade at all 4 elementary schools and consider PK3, where possible.	Reconfigure spaces in Grantsville to accommodate Rt. 40 enrollment including 6th grade and PK3. Reconfigure space at Accident and Friendsville to accommodate 6th grade and PK3, where possible	Complete limited renovation for Northern Middle School to support Accident Elementary School, Friendsville Elementary School PK3-6, STARS.
<b>Vacate</b>	N/A	Vacate Northern Middle School	Vacate Northern Middle School, Route 40 Elementary School	Vacate Accident Elementary School, Friendsville Elementary School, Route 40 Elementary School



# Grantsville/Rt.40 Combined

*Proposed ES, PK-6*



**Grantsville ES**

PK-5 Enrollment = 171

**Route 40 ES**

PK-5 Enrollment = 122

---

**Grantsville ES + Route 40 ES**

**6<sup>th</sup> Grade Population: 49**

**Combined Projected PK-6 Enrollment = 342**

**Projected Grantsville ES SRC = 380**



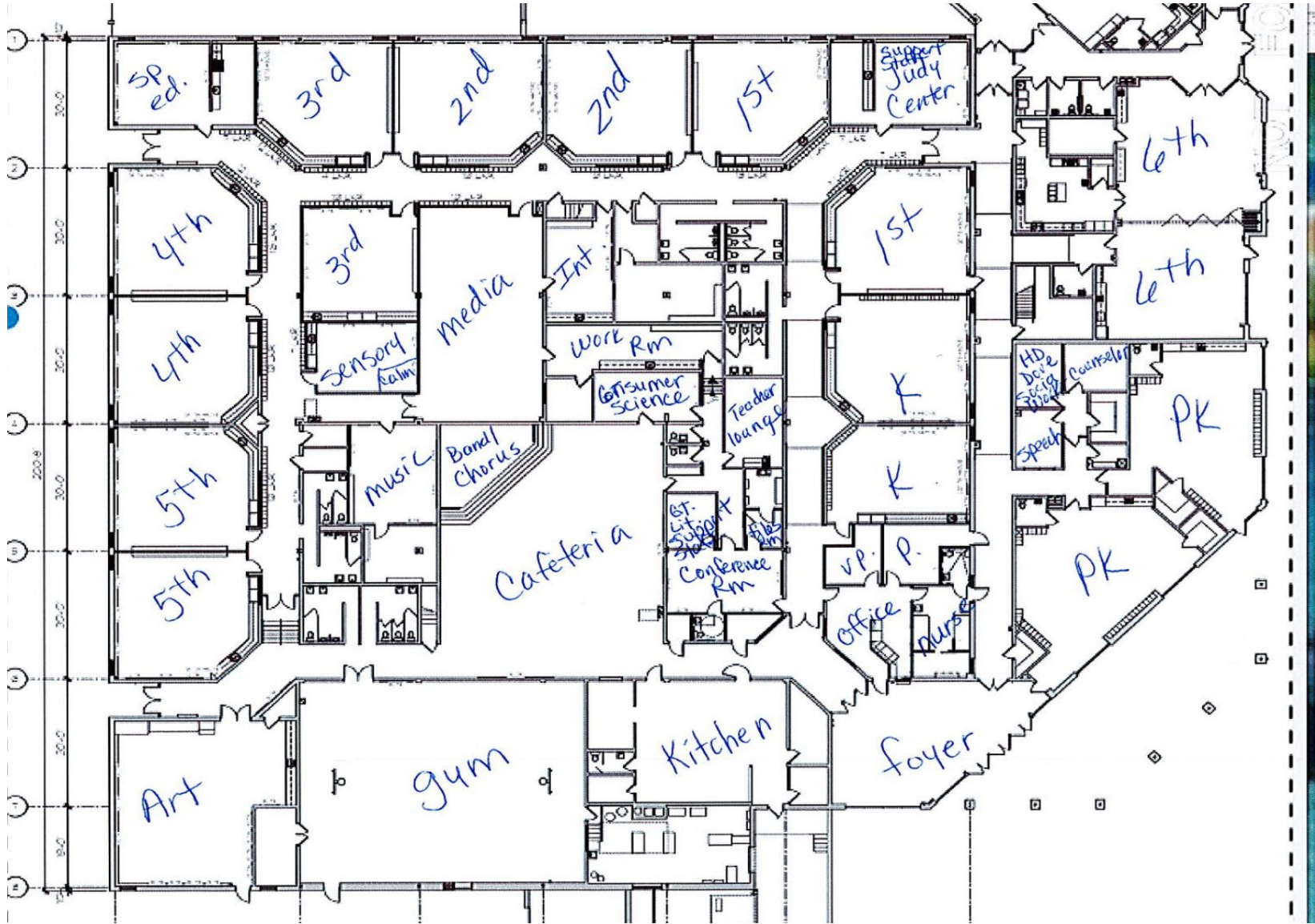


# Grantsville/Rt.40 Combined Elementary PK-6 Model

# Option B

Square Feet= 49,862  
Projected SRC= 380  
Projected Enrollment= 342

- The map shows one option to include Rt.40/Grantsville population at Grantsville including 6th grade.



# Our Team

## Grimm + Parker Architects



**Dave Wolf**  
LEED AP  
Project Manager  
15 years @ G+P



**Laura Smyles, AIA,**  
WELL AP  
Project Architect  
Educational Planner  
10 years @ G+P

## Consultant Team

**Raymond Rase PE, PLS**  
Civil Project Manager  
SPECS, inc.

**Randall O. Spencer PE, RCDD**  
IT Systems Department Head / Electrical Engineer  
Ascent Engineering Group, Inc.

**Randall Daniels ASPE, ICC, NFPA**  
Mechanical, Plumbing + Fire Protection Engineer  
Ascent Engineering Group, Inc.

Ronald Wolfman PE  
Structural Engineer  
Wolfman + Associates

## Additional G+P Project Support

**Karen Burlingame AIA, LEED AP**  
Quality Control + Quality Assurance

**William Downey** **Don Porter, AIA**  
**Chief Estimator** Code + Life Safety  
Downey + Scott

**Amy Upton, AIA, LEED Fellow**  
Sustainability + Environmental Design



# The Grimm + Parker Team

## National Expertise, Local Depth

- Ranked **#3 nationally** in K-12 design
- **50-year history** within Maryland
- Only **locally-owned** firm in **WBJ Top 10**
- More than **190 education + design awards**
- **WNEBC Certified Women-Owned Business**



**95+**  
EMPLOYEES

*“ Working at G+P means I can play a role in so many parts of the design process. ”*

*- Michael Smyles*





# Experience: K-12 250+ Educational Projects





# K12 Design Considerations

## *Exploration*

Developing space program for the student experience.



*Shift from Teaching to Learning*





# K12 Design Considerations

Variety of Spaces



Spaces for Collaboration



Hands on Learning





# K12 Design Considerations



*Hands on Learning*





# K12 Design Considerations



*Outdoor  
Learning  
Spaces*

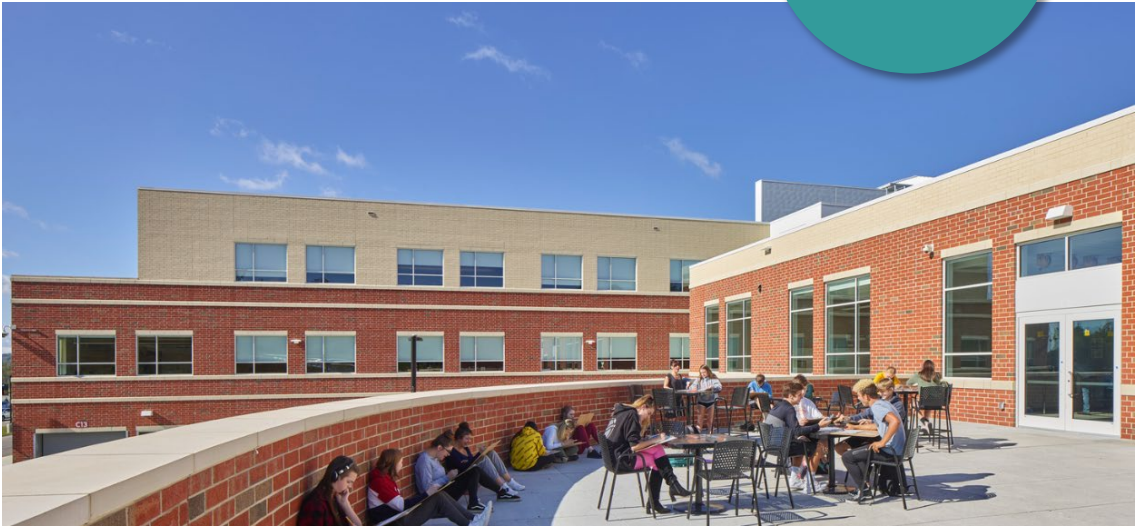




# K12 Design Considerations



*Outdoor Learning Spaces*





# K12 Design Considerations



*Career and  
Technical  
Education*





# K12 Design Considerations

Acoustics



Access to Daylight



Indoor Air Quality



# K12 Design Considerations



*Safety and Security*



*Technology*

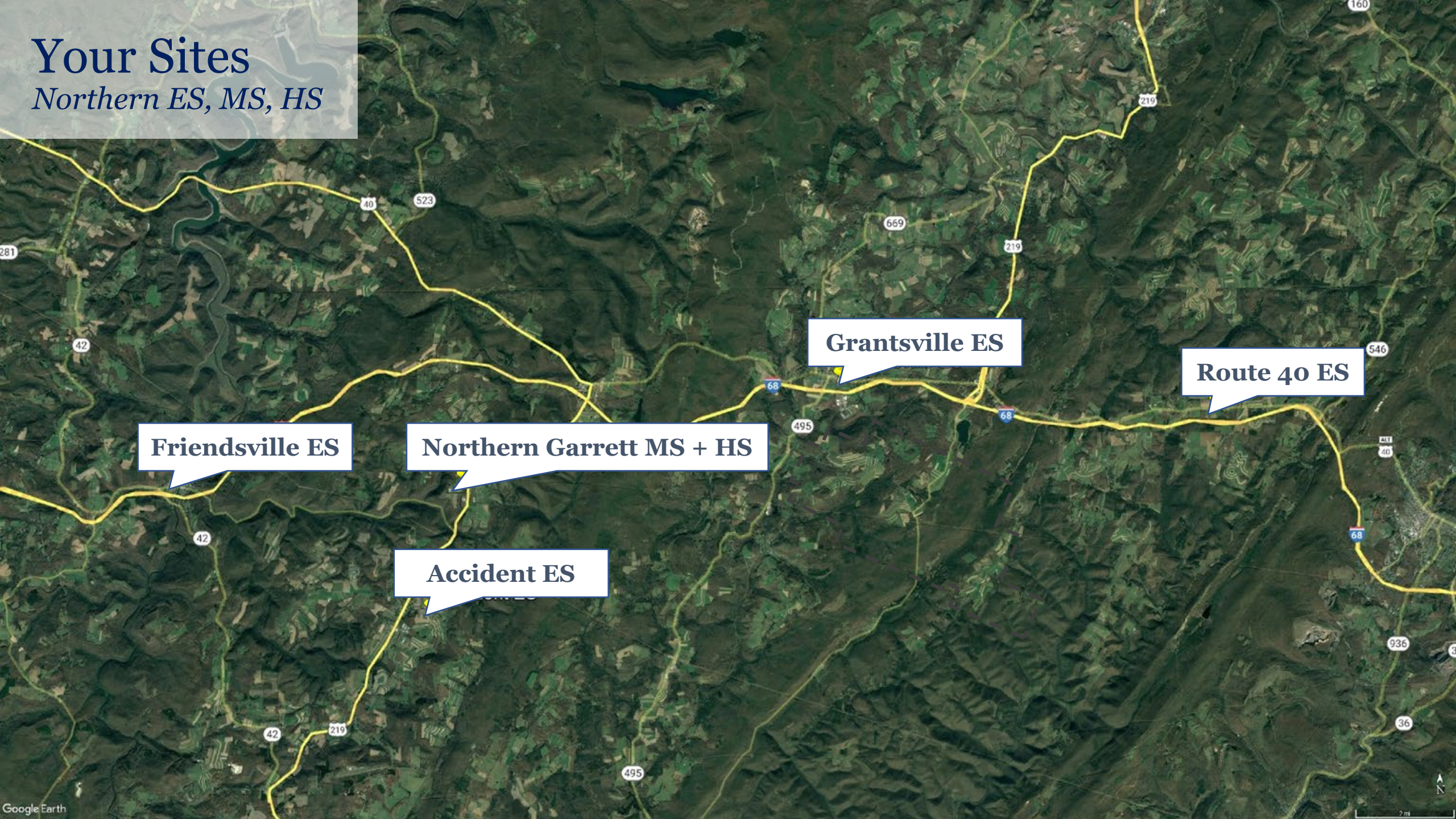


*After Hours Access*



# Your Sites

*Northern ES, MS, HS*



**Friendsville ES**

**Northern Garrett MS + HS**

**Accident ES**

**Grantsville ES**

**Route 40 ES**



# OPTION C

## Overview

	All Options	A	B	C
	Northern High School to match gradeband alignment at Southern High School - supporting grades 7-12.	<b>Maintain 4 Northern Elementary Schools:</b> Grantsville Elementary School, Accident Elementary School, Friendsville Elementary School, and Route 40 Elementary School	<b>Maintain 3 Northern Elementary Schools:</b> Grantsville Elementary School (including Route 40 Elementary enrollment), Accident Elementary School, Friendsville Elementary School	<b>Maintain 1 Northern Elementary School:</b> Grantsville Elementary School (+Route 40 Elementary enrollment), <b>Complete limited renovation of Northern Middle School to support grades PK3-6</b> for Accident Elementary School and Friendsville Elementary School
<b>Requirements</b>	Reconfigure spaces for grades 7-8 at Northern High School which will require a limited renovation.	Reconfigure space to accommodate 6th grade at all 4 elementary schools and consider PK3, where possible.	Reconfigure spaces in Grantsville to accommodate Rt. 40 enrollment including 6th grade and PK3. Reconfigure space at Accident and Friendsville to accommodate 6th grade and PK3 where possible	Complete limited renovation for Northern Middle School to support Accident Elementary School, Friendsville Elementary School PK3-6, STARS.
<b>Vacate</b>	N/A	Vacate Northern Middle School	Vacate Northern Middle School, Route 40 Elementary School	Vacate Accident Elementary School, Friendsville Elementary School, Route 40 Elementary School

# Your Project

## Overview

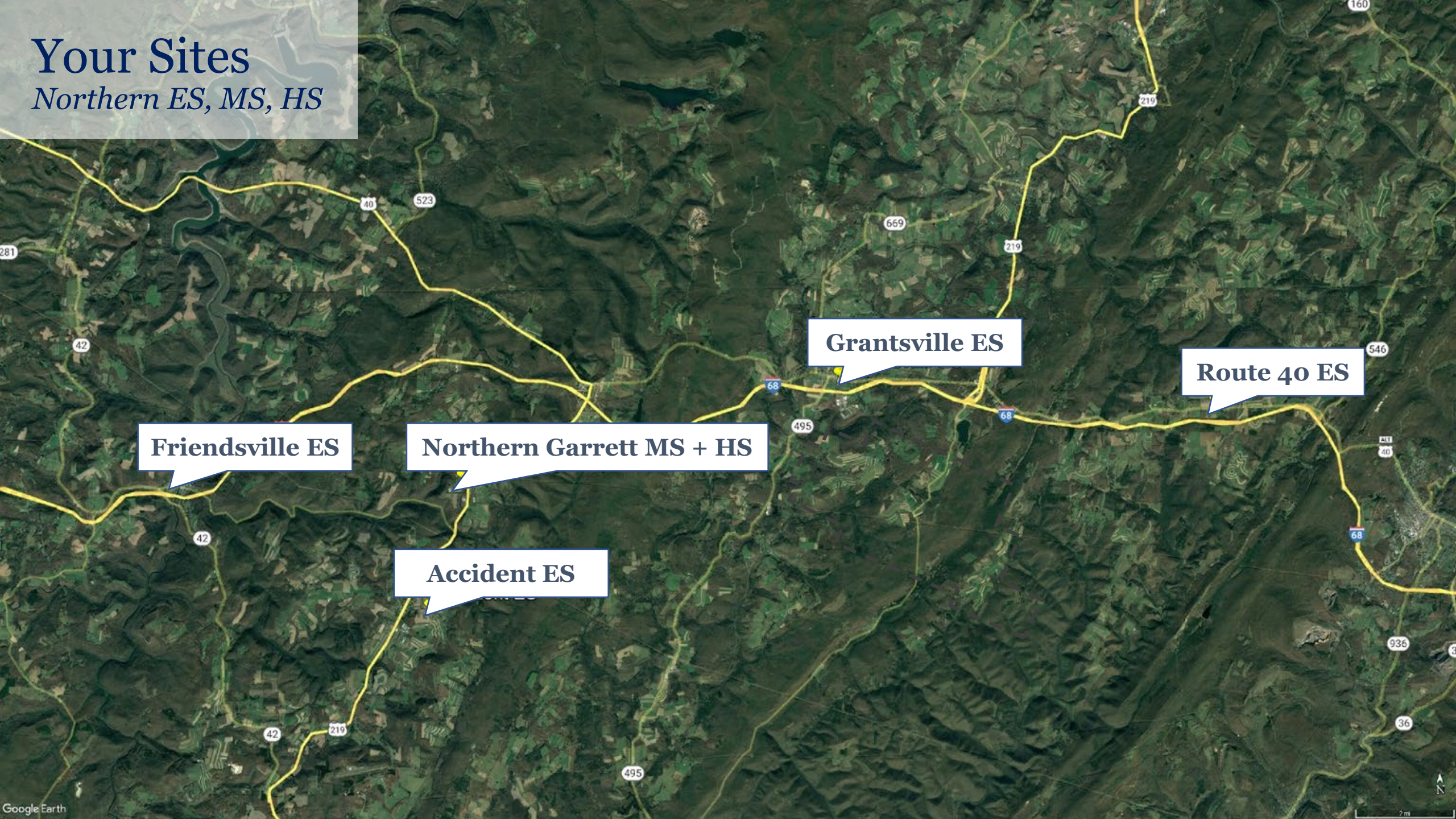
	All Options	C
	<i>Northern High School to match gradeband alignment at Southern High School - supporting grades 7-12.</i>	<b>Maintain 1 Northern Elementary School:</b> Grantsville Elementary School (+Route 40 Elementary enrollment), <b>Complete limited renovation of Northern Middle School to support grades PK3-6</b> for Accident Elementary School and Friendsville Elementary School enrollment
<b>Requirements</b>	Reconfigure spaces for grades 7-8 at Northern High School which will require a limited renovation.	Complete limited renovation for Northern Middle School to support Accident Elementary School, Friendsville Elementary School PK3-6, STARS.
<b>Vacate</b>	N/A	Vacate Accident Elementary School, Friendsville Elementary School, Route 40 Elementary School





# Your Sites

*Northern ES, MS, HS*



**Friendsville ES**

**Northern Garrett MS + HS**

**Accident ES**

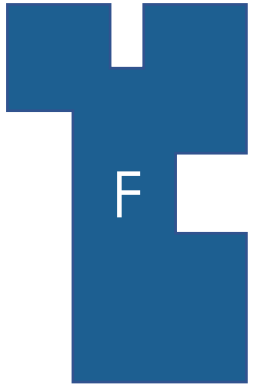
**Grantsville ES**

**Route 40 ES**



# Accident/Friendsville Combined

*Proposed Northern MS, Grades PK-6*



## Friendsville ES

PK-5 Enrollment = 138  
Current SRC = 294



## Accident ES

PK-5 Enrollment = 235  
Current SRC = 327

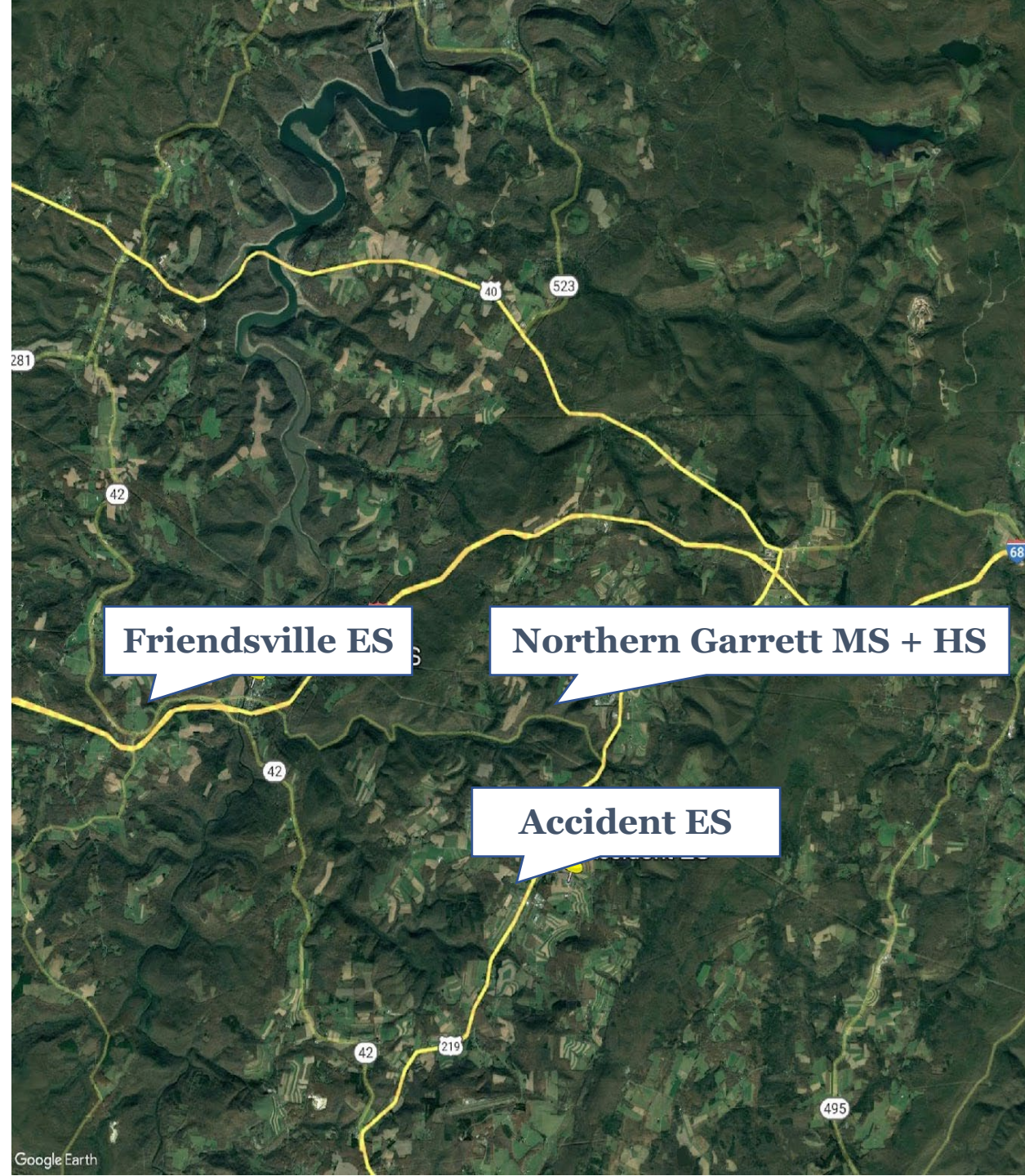
---

## Friendsville ES + Accident ES

Combined PK-5 Enrollment = 373  
6th Grade Enrollment = 42  
2021 total enrollment PK-6 = 415

---

**Northern Middle School Current SRC = 742**





# Your Site

## Existing Middle School Plan

84,008 sq ft  
742 SRC



### Department Legend

- |   |  |   |
|---|--|---|
| <span style="color: red;">■</span> 01 ADMINISTRATION              | <span style="color: yellow;">■</span> 06 SPECIAL EDUCATION | <span style="color: blue;">■</span> 10 PHYSICAL EDUCATION |
| <span style="color: red;">■</span> 02 HEALTH SERVICES             | <span style="color: blue;">■</span> 07 SCIENCES            | <span style="color: pink;">■</span> 11 FOOD SERVICES      |
| <span style="color: red;">■</span> 03 GUIDANCE                    | <span style="color: purple;">■</span> 08 RELATED ARTS      | <span style="color: grey;">■</span> 12 BUILDING SERVICES  |
| <span style="color: lightblue;">■</span> 05 TEACHING AND LEARNING | <span style="color: green;">■</span> 09 MEDIA              | <span style="color: orange;">■</span> 13 COMMUNITY SPACE  |



3/32"=1'-0"

# Meeting #1 Feedback - Opportunities

Northern PK-6 School

## Overall Approach

- Equity county-wide
- Proven concept serving as Grantsville swing space.

## Creating Community

- Stronger, more consistent family connections
- Critical mass of community support
- "It's more about school community than the building"

## Expanded Curriculum

- Increase in STEM opportunities
- Learning Communities – Grade Pods
- Less variance in class sizes
- Opportunity for flexible spaces

## Instructional Support

- Teacher collaboration
- More teachers for varied teaching styles, more responsive to student needs
- Maximizing support resources full time on one campus
- Flexibility in staffing – departmentalize grades based on teacher strengths

NORTHERN GARRETT GRADE BAND — ES.

## #1 WHAT CURRENT OPPORTUNITIES

- SECTIONED OFF - NO UNNECESSARY MIXING
- SEPERATE RESTROOMS, GRATE PODS
- KINDEGARTEN + PK ROOM - LOOK @ SF + MAKE SURE IN RANGE.
- LANGUAGE OFFERINGS [INCREASE]

## Added Value + Resource Access

- Proximity to Hickory Environmental Educational Center and Planetarium
- Resource Teachers – All day, every day

## Special Education

- Various Inclusion Spaces
- All Regional Special Ed Programs in one facility

## Site Amenities

- Playground equipment
- Barn Space + Animal Hosting
- DEPARTMENTALIZATION - LET TEACHERS TEACH THEIR PASSION
- ~~TEACHER COLLABORATION~~ VARIED TEACHING STYLES MORE RESPONSIVE TO STUDENT NEED
- VARIED INCLUSION SPACES TO RESPOND
- PLANETARIUM



# Meeting #1 Feedback - Challenges

## Northern PK-6 School

### **Transportation**

- *Increase in bus ride length for some students*
- *Extra staff and aids to support new/extended routes*

### **Site Circulation**

- *Existing Northern Middle drop off too short*
- *Morning traffic congestion is problematic*
- *Limited outdoor space*

### **Community**

- *Maintaining plans for outdoor education*
- *Meeting community recreation needs*

### **Student Experience**

- *Class sizes – Would they increase?*
- *Capacity of cafeteria requires scheduling lunchtime too early*
- *Must meet square footage requirements for PK + K*
- *Develop spreadsheet for comparison of all schools class sizes*
- *Student storage requirements*

### **Instructional Support**

#### *Further exploration of:*

- *Admin Support, Nursing needs*
- *Custodial needs*
- *Evacuation needs and procedures*
- *Bus duty and lunch duty needs*
- *Counselling and Social support needs*
- *Planning time for Resource teachers*

### **Special Education**

#### *Further exploration of:*

- *STARS and ALO support*



# Meeting # 1 Feedback – Future Considerations

*Northern PK-6 School*

*What will student experience, culture, and community be like for 6<sup>th</sup> graders?*

*Will this new school configuration effect Title 1 Funding?*

*With increase in resource offerings, will resource teachers have adequate planning time?*

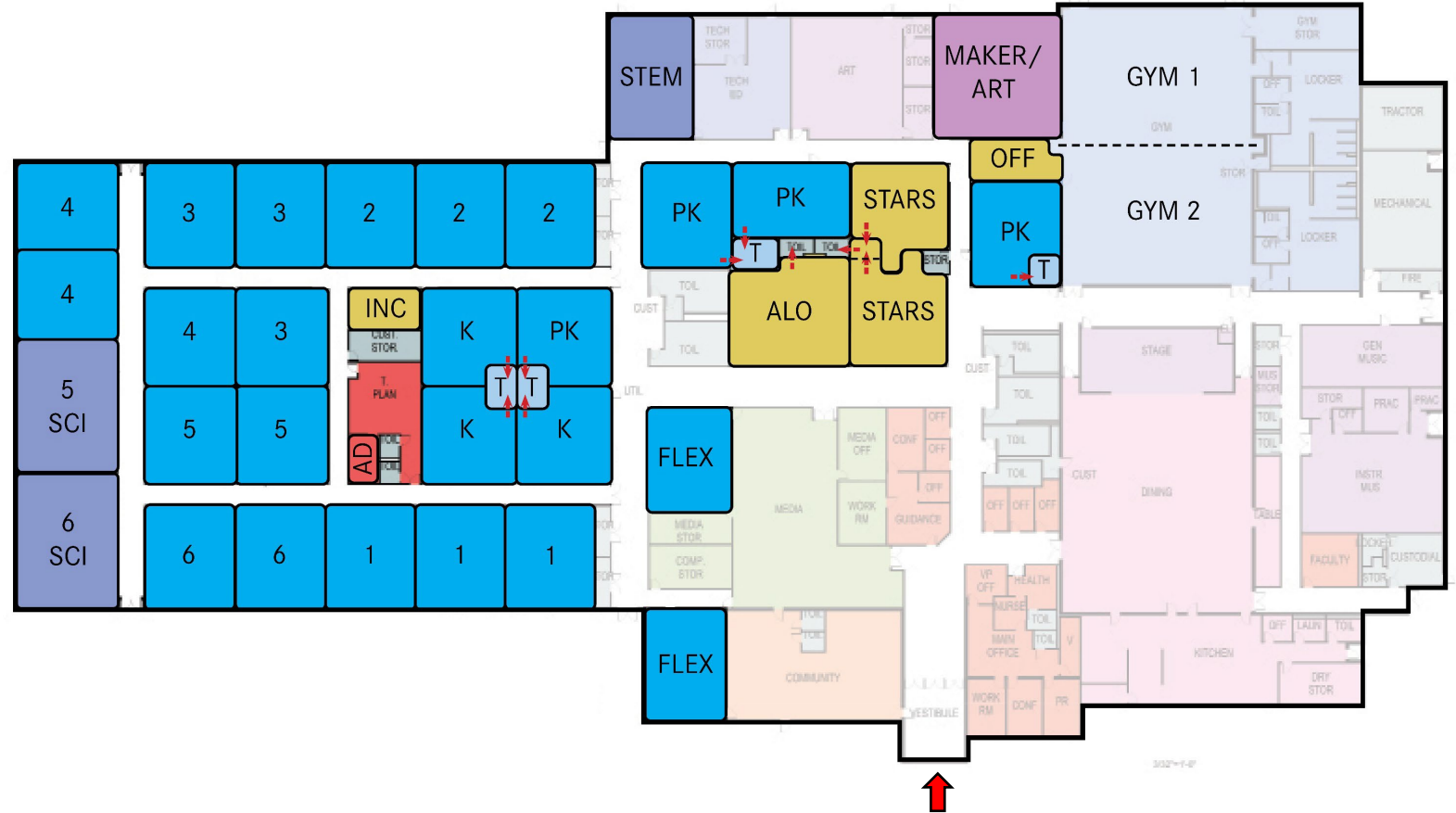


# Meeting #1 – Test Fit Feedback

## Northern PK-6 School – Test Fit

### Meeting # 1 Feedback

- Elementary and sixth grade science curriculum does not require full scale middle school science lab. Could recapture this larger space to serve as PK classroom.
- Pre-Kindergarten classrooms adjacency to STARS program could present issues.
- Classroom sizes for PK and K classrooms needs to be sufficient for curriculum + resources.
- Student Storage will be required for all grades, including lockers outside classrooms for grades 4 + 5 + 6.



Northern PK-6  
Meeting # 1 Test Fit





# Your Site

## Proposed PK-6 Plan

84,008 sq ft

742 SRC

415 planned enrollment

186 sq ft/student

### Opportunities:

- Learning Communities
- Flexible Classrooms to accommodate growth
- Distributed Administration for Supervision
- Robust specialty spaces unique for grades PK-6
- Additional Inclusion spaces and offices for support staff
- 5<sup>th</sup> and 6<sup>th</sup> grade spaces close to other specialty spaces
- PK3-4th easy access to playgrounds
- Additional Administrative Space available



### Department Legend

<span style="color: red;">■</span> 01 ADMINISTRATION	<span style="color: yellow;">■</span> 06 SPECIAL EDUCATION	<span style="color: blue;">■</span> 10 PHYSICAL EDUCATION
<span style="color: red;">■</span> 02 HEALTH SERVICES	<span style="color: purple;">■</span> 07 SCIENCES	<span style="color: pink;">■</span> 11 FOOD SERVICES
<span style="color: red;">■</span> 03 GUIDANCE	<span style="color: purple;">■</span> 08 RELATED ARTS	<span style="color: lightblue;">■</span> 12 BUILDING SERVICES
<span style="color: blue;">■</span> 05 TEACHING AND LEARNING	<span style="color: green;">■</span> 09 MEDIA	<span style="color: orange;">■</span> 13 COMMUNITY SPACE

# Your Site

*Proposed Northern HS, Grades 7-12*



NMS

## Northern MS

7-8 Enrollment = 208

Current SRC = 742



NHS

## Northern HS

9-12 Enrollment = 439

Current SRC = 903

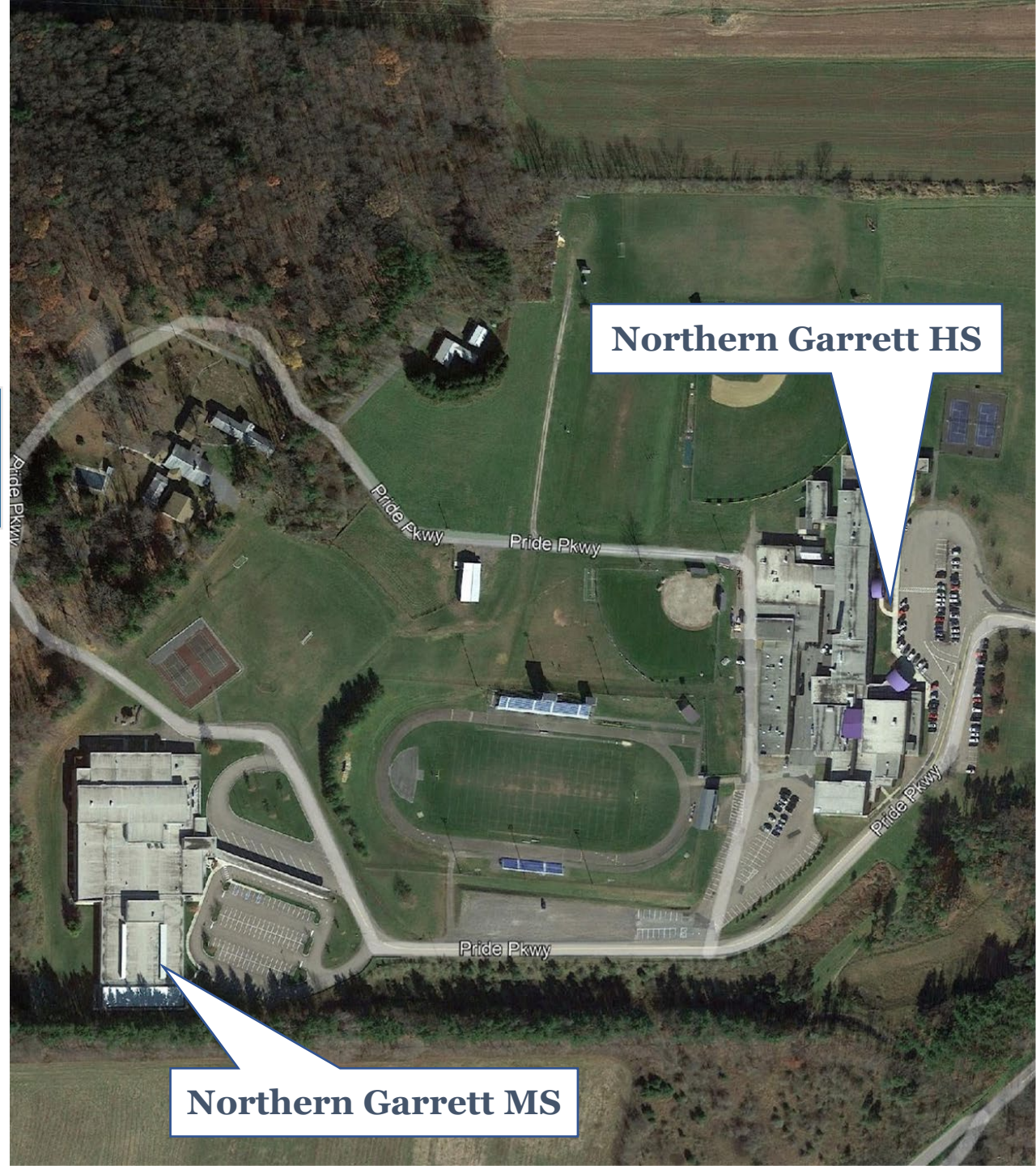
---

## Northern MS + Northern HS

Combined 7-12 Enrollment = 647

---

**Northern High School Current SRC = 903**





# Your Site

## Existing High School Plan

121,803 sq ft  
903 SRC

### Department Legend

- 01 ADMINISTRATION
- 03 GUIDANCE
- 05 TEACHING AND LEARNING
- 06 SPECIAL EDUCATION
- 07 SCIENCES
- 08 RELATED ARTS
- 09 MEDIA
- 10 PHYSICAL EDUCATION
- 11 FOOD SERVICES
- 12 BUILDING SERVICES
- CIRCULATION



NORTHERN HS EXISTING PLANS

1/8" = 1'-0"

# Meeting #1 Feedback - Opportunities

Northern 7-12 School

## Overall Approach

- Equity county-wide

## Creating Community

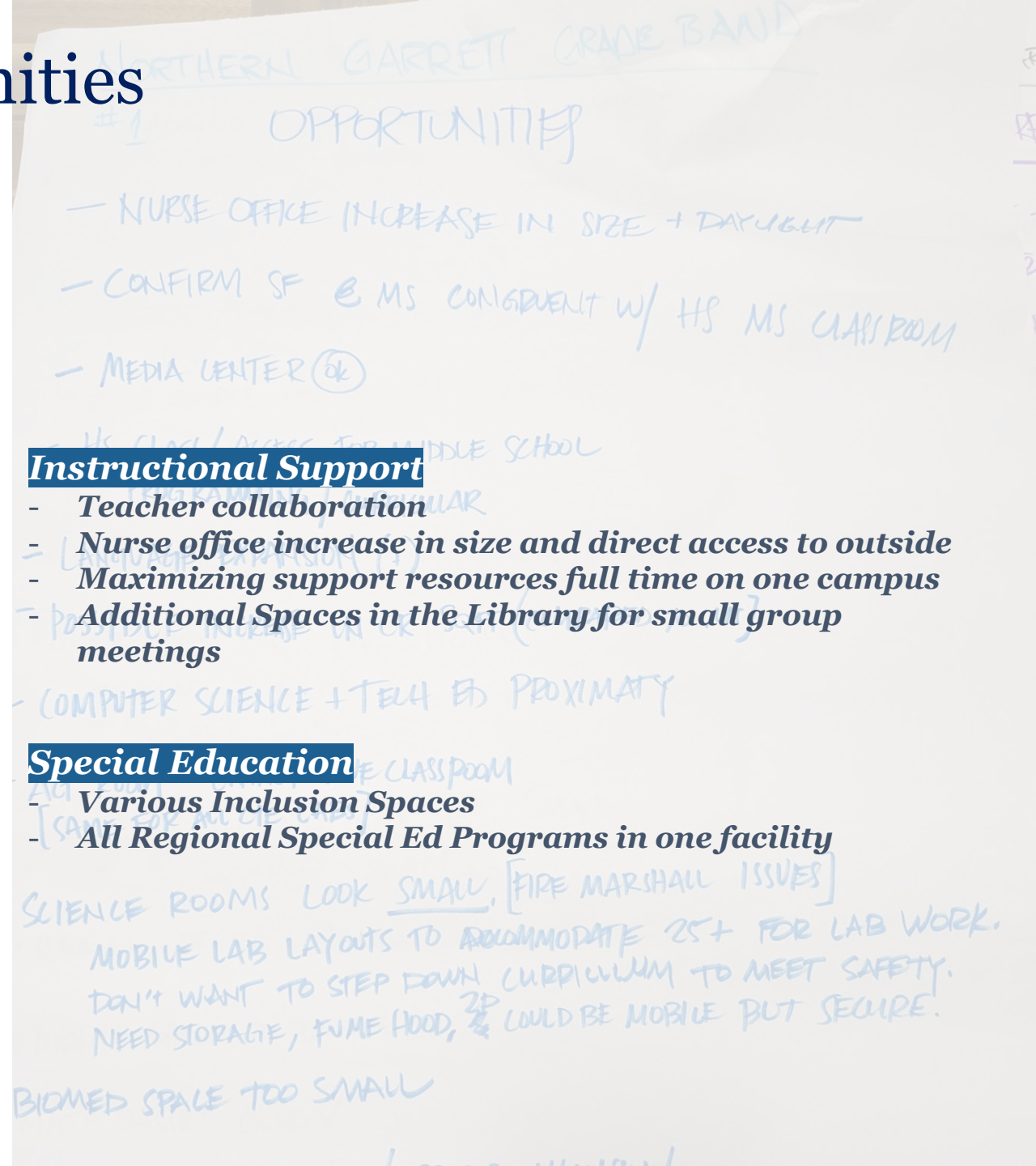
- Middle School and High School mentoring

## Expanded Curriculum

- More opportunity for extracurriculars with more students
- Increase in STEM opportunities
- Grade-Level Learning Communities
- Less variances in class sizes
- Potential increase in Foreign Language offerings
- Potential increase in other more flexible spaces for film making, arts, creative writing
- Related arts teachers – more access to more students to enrich the programs; band, chorus, theatre, arts

## Added Value + Resource Access

- Maximizing efficiency of existing high school spaces
- Create variety of sizes of educational spaces to meet individualized needs





# Meeting #1 Feedback - Challenges

## *Northern 7-12 School*

### **Site Circulation**

- *Morning traffic congestion is problematic*
- *Limited outdoor space*

### **Community**

- *Maintaining plans for outdoor education*
- *Meeting community recreation needs*

### **Student Experience**

- *Class sizes – Would they increase?*
- *Capacity of cafeteria requires scheduling lunchtime too early*
- *Minimizing unsupervised interaction among grade-levels*
- *Square footage requirements for science and arts curriculum*

### **Instructional Support**

- *Admin Support, Nursing needs*
- *Custodial needs*
- *Counselling and Social support needs*
- *Planning time for Resource teachers*

### **Special Education**

- *STARS and ALO support*



# Feedback – Future Considerations

*Northern 7-12 School*

*What will student experience, culture, and community be like for 7<sup>th</sup> and 8<sup>th</sup> graders?*

*How will this effect community and school-based recreation activities?*

*With increase in resource offerings, will resource teachers have adequate planning time?*



# Meeting #1 Feedback – Test Fit

## Northern 7-12 School

### Meeting # 1 Feedback

- 7<sup>th</sup> and 8<sup>th</sup> grade science is not sufficient to meet curriculum needs.
- Lab spaces may not be sized appropriately
- Music Rooms should be divided into 2 separate areas.
- Portion of existing Media Center could be re-purposed as counseling spaces and informal meeting spaces to meet increased student need.







# Your Site

## Potential Proposed 7-12 Plan

121,803 sq ft  
 903 SRC  
 678 planned enrollment  
 180 sq ft/student



### Opportunities:

- 7-8 Community
- Larger size 7-8 Labs
- Decentralized Admin
- HS Math “Wing”
- More secure entrance with location of SRO
- Additional small group meeting spaces
- More efficient Music



## Flexible Science Classrooms

- Cord Reels
- Gas line reels
- Fixed furniture and utilities to the perimeter



# Your Site

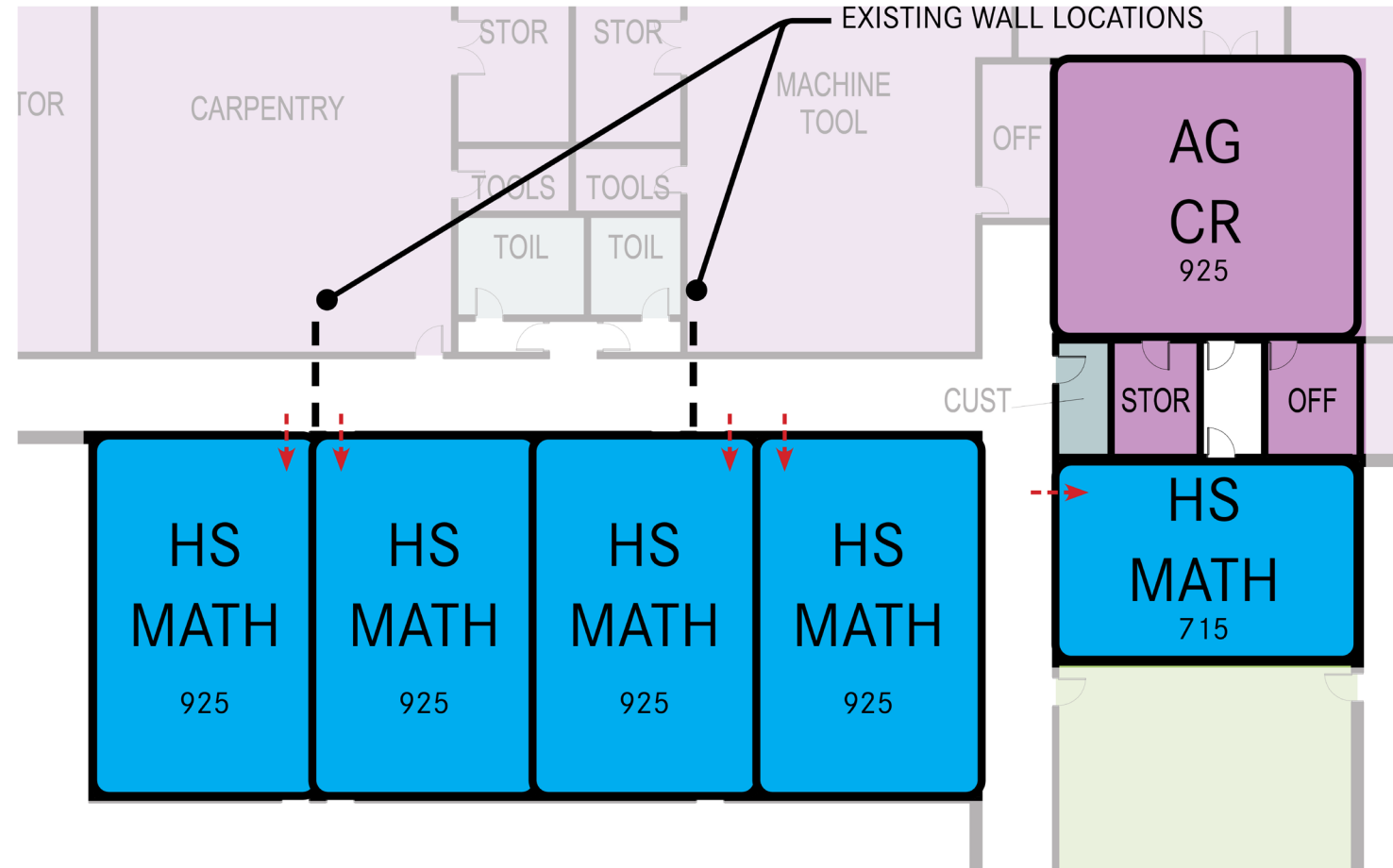
## Math Wing Option – Basis of Design

### Opportunities:

- (5) Math CR in the Math wing
- Larger more adequate class space for Math CR's
- Renovate AG space to accommodate better more efficient AG CR
- Better supervision of AG Lab and AG CR for safety and security

### Challenges:

- Renovate AG space to accommodate new AG CR
- Relocate tractor to outside storage



# Your Site

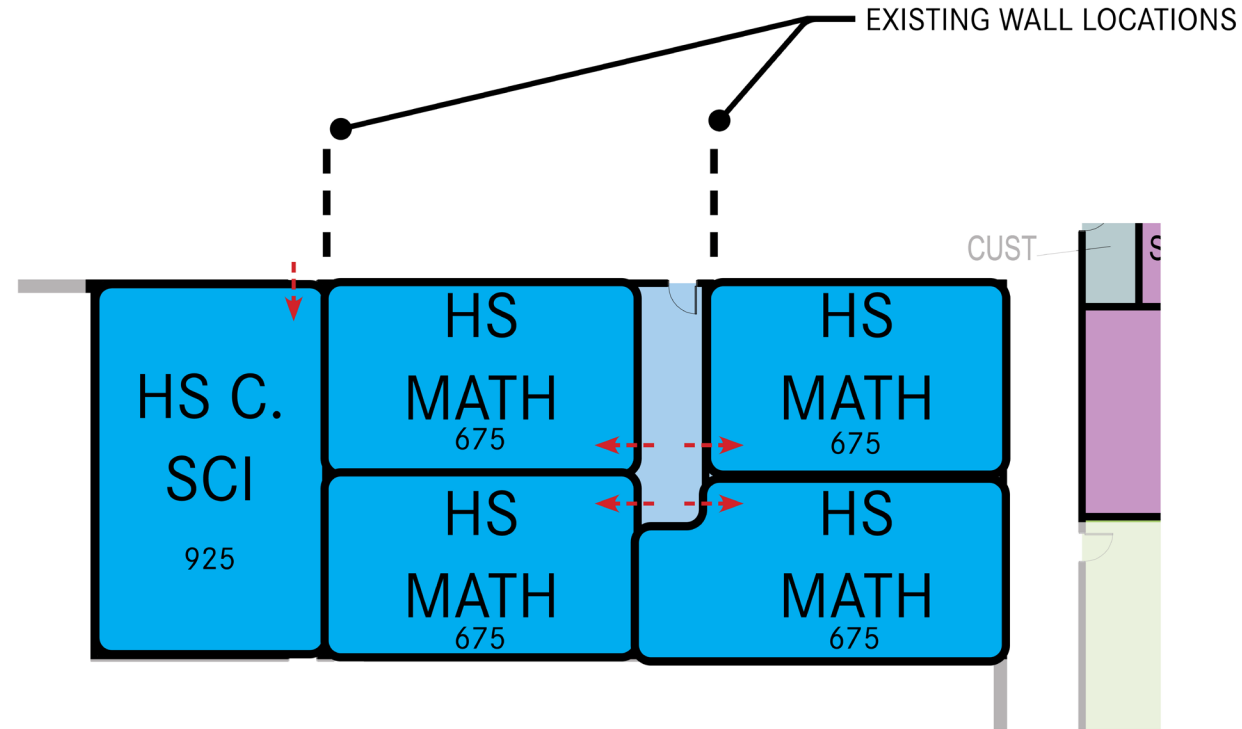
## Math Wing Option – Alternative 1

### Opportunities:

- (4) Math CR in the Math wing
- AG remains as is
- HS Computer Science near PLTW
- Little demolition of existing wall construction

### Challenges:

- Smaller less adequate class space for Math CR's
- One remote Math CR





# Your Site

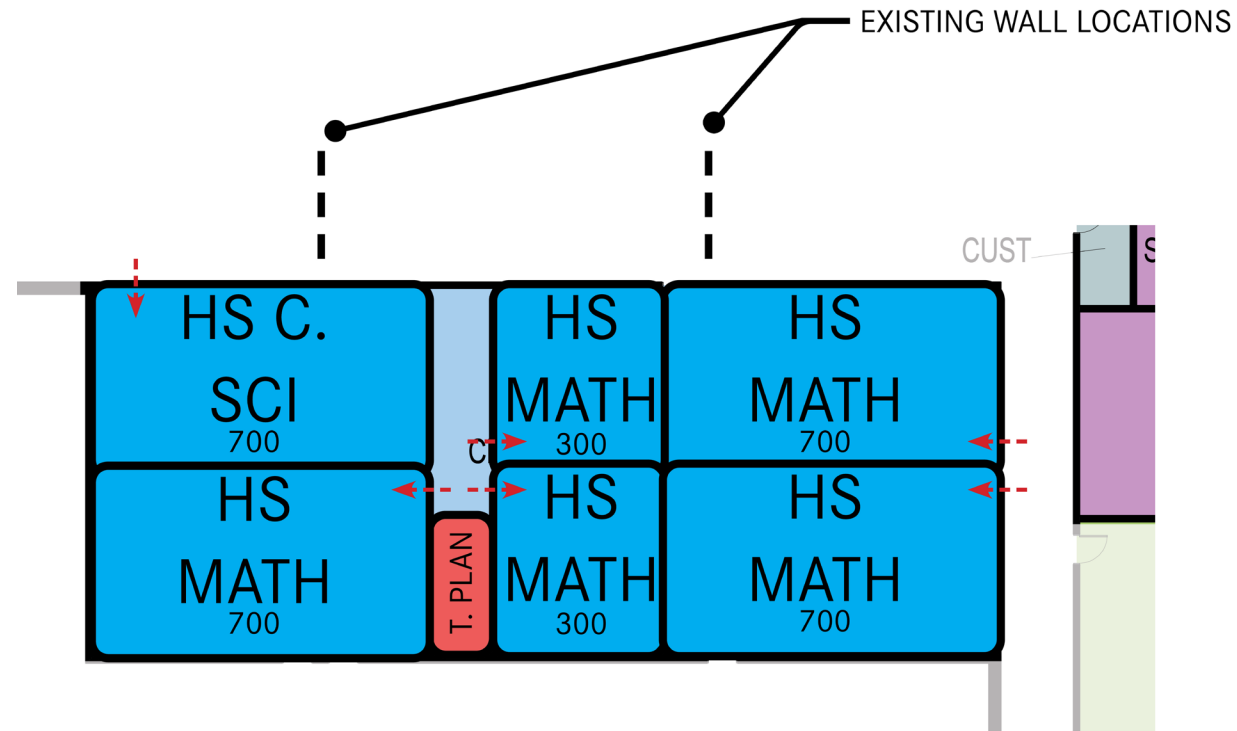
## Math Wing Option – Alternative 2

### Opportunities:

- 5 Math CR in the Math wing
- AG remains as is
- HS Computer Science near PLTW
- More flexible class sizes for Math
- Smaller Math spaces that may not be utilized all day could be used as additional small group or conference space
- Additional Teacher Planning room or Confroom

### Challenges:

- Smaller less adequate class space for Math CR's and C. Sci
- Scheduling of the larger and smaller Math CR sizes



# Next Steps



1. Continue to solicit and review stakeholder feedback
2. Finalize proposal for presentation to the elected Board of Education

## Multi-Year Proposed Timeline:

**SY2022-23** - Committee and Stakeholder meetings. No student or staff disruption.

**SY2023-24** - Limited renovations to spaces to accommodate different grade bands. No student or staff disruption.

## SY2024-25 -

- 7th & 8th grade students would begin attending Northern High School.
- Elementaries would become PK-6 grade. (Specific elementaries TBD)

**NOTE:** At this time, no action has been taken by the Board of Education.





# Feedback

- 1) What are the current opportunities with the Grade Band Alignment and test fit at Northern Middle and Northern High?
- 2) What are the current challenges with the Grade Band Alignment and test fit at Northern Middle and Northern High?

